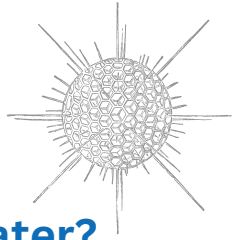


What is the Magic?

Adding Biogenic Amorphous Silica (BAS) and compost gets a better result than adding either material alone, plants grow much better with both. It is like 1 + 1 = 5 Who knows why? It just does.

Magnified diagram of fossilised radiolarium plankton, it is filled with a honeycomb of tiny tunnels.



How does it hold water?

BAS is composed of tiny fossilized radiolarian plankton that died over 125 million years ago. Its intricate network of pores and tunnels retains more water and nutrients for plants. More water and nutrient efficient than clay, it allows for reduced usage, longer intervals between watering, and better resilience to hot weather.

Additionally, BAS releases plant-available silicon, which helps protect plants from various stresses such as heat, drought, insects, and, crucially for turf, the wear and tear of kids and animals and foot traffic during sports events.

Distributed by:



TELEPHONE: 02 4571 6444

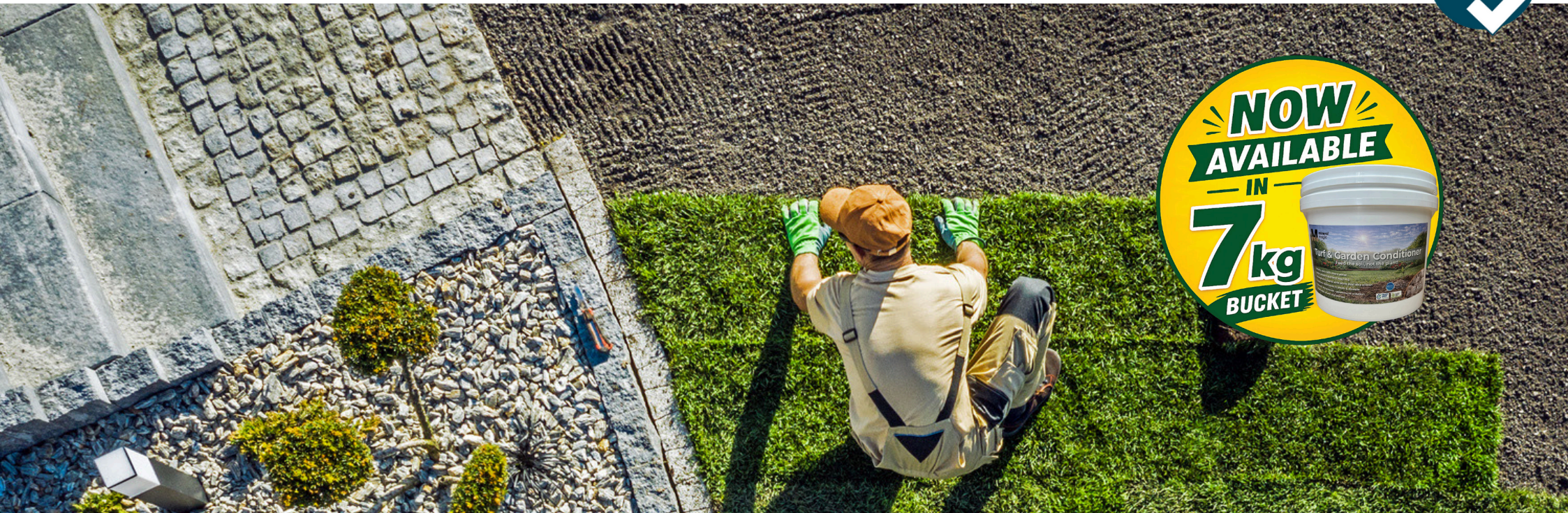
EMAIL: sales@turfcareaus.com.au

WEB: www.turfcareaus.com.au



Benefits at a Glance.....

- ✓ Proudly 100% Australian product
- ✓ 20kg bag treats up to 40sqm
- ✓ Light and easy to use
- ✓ Holds more water & nutrients
- ✓ Helps plants cope better with hot weather
- ✓ Boosts resistance to pests and diseases



Is it safe?

It is perfectly safe for you, kids and pets. It is not the dangerous **crystalline** form of silica and is certified organic. It is sensible to wear a face mask as the dust can be irritating. A full safe data sheet can be downloaded from our website

Hydroponics & Aquaponics

The very best medium on the market, being a reusable material that brings increased crop yields, faster growth and disease resistance. It is being used by commercial medicinal cannabis growers.

Lawns

For the best result prepare soil before laying a lawn for easier long-term care and maintenance. Add about 500 grams to 1 kilogram of Mineral Magic per square meter and a 10 cm layer of soil conditioner and mix thoroughly with a hoe.

For lawn renovations, either core the lawn and add 500 gms per sqm mixed with compost or repeatedly add 100 gms per sqm over a few months. Use a good quality wetting agent and hose into the ground.



How to use

Mineral Magic (MM) can be hoed or raked into any existing soil, mixed into a planting hole or added to seedling or potting mix or in Hydroponics. It adds air to clay soil, and water holding to sandy ground.

How much to use

- In lawns & gardens, from 500g per sqm reliably shows yield increases and plant health benefits
- Adjust the quantity for the plant's water needs. The more you add, the more water and nutrients are held in the soil, choose between 500 gms to 10 kgs per sqm. Lower rates for natives and lawns and higher rates for leafy veg and potting mixes.
- Add small amounts as annual applications, or in each planting hole, or add as a single application. Each application is permanent.
- You cannot add too much, it is safely used 100% as a growing medium in hydroponics.

Where is it being used?

MM is being used in sporting grounds, public parks and gardens, and in agriculture. Several Shire Councils have undertaken rigorous trials over the last four years that show genuine water savings and plant health benefits, and are now using MM in all new plantings and turf renovations.

MM has been exported to the Middle East for a new golf course, and to name just a few, it has been used at Mt Lawley Golf Course, and at Supreme Court gardens in the City of Perth.



Healthier plants

- Plant available silicon builds cell wall strength, which increases plant resistance to drought, heat, wear & tear, fungus and insect attack.
- Improves the results of wetting agents and fertilisers
- Durable, it remains permanently in the soil.
- Works equally well in clay or sandy soils, reducing compaction as the particles do not crush or slake.

Gardens

Exotic plants like roses, annuals and fruit trees will be more resilient to very hot weather, and less troubled by pests and diseases. Grow more with less water!

Adding MM to a vegie patch means watering less frequently. Very effective with water hungry plants like leafy vegetables grown in sandy soil, as seen with this larger plant grown with Mineral Magic on the left.



Native gardens

Ideal for native plants, as it adds water holding capacity for young plants without changing the soil structure. A few handfuls in a planting hole to help nurture young plants through their first hot summer.

